

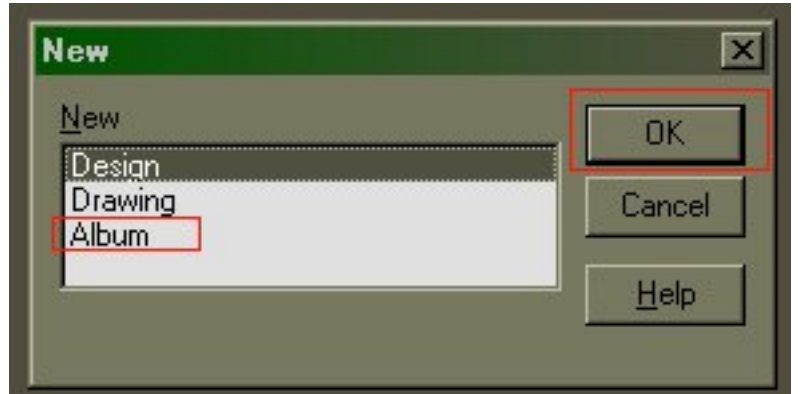
ProDesktop Album Tutorial

This is a short tutorial document to show you how to use the Album function on Pro-desktop. This section of the program allows you to add colour and graphics to your car design before the car is manufactured. This allows you to experiment with colours and show off a range of ideas, quickly and easily.

1. Once you have finished and saved a car design in Pro-desktop, you need to click on the 'New' icon at the top left hand side of the screen. This looks like a sheet of paper with one corner folded. Single click this and a pop up window appears.



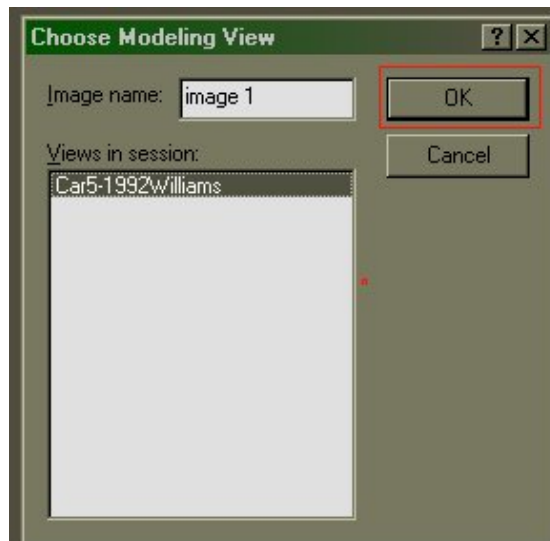
2. On this window, select 'Album' and press 'OK'. This will bring up a new screen. You will notice that your car is no longer on the screen. Do not worry, as we now need to bring your car design into the album function.



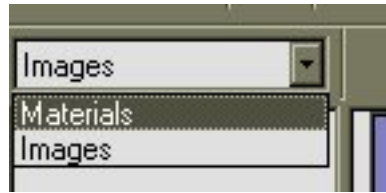
3. To bring in you car design, click on 'Image' from the tool bar at the top of the page. This introduces a drop down box. Now select 'New Image'.



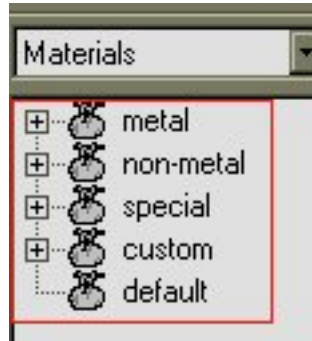
4. This in turn brings up a pop up box with a list of all the recent Pro-desktop designs created on that computer. Select your design from the list by clicking once on the name. Now click on 'OK' and your design will appear on the screen.



5. To add colour and texture to your design, select the drop down box towards the top left of your screen. This will currently say 'Images'. Click on the down arrow and select 'Materials' by clicking once on the word.

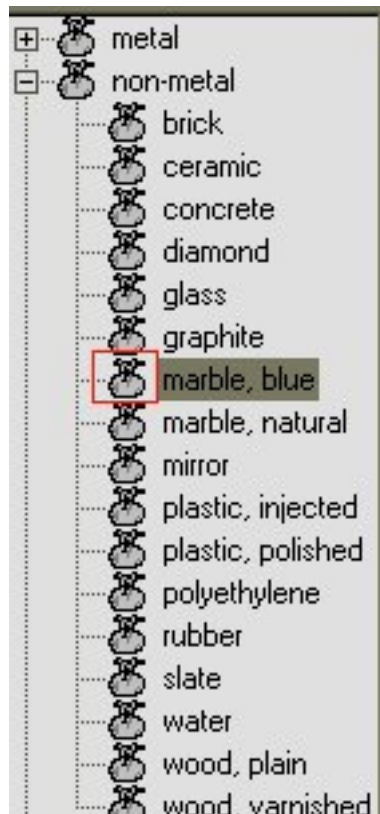


6. Below this box will appear a selection of groups which can be expanded by clicking on the '+' symbol next to the group you want.



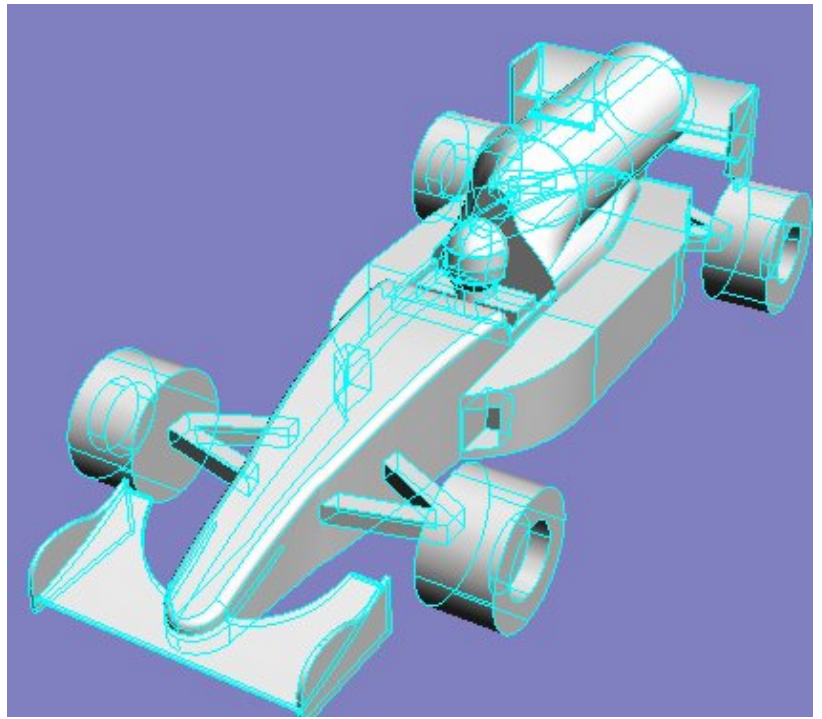
7. For the purpose of this tutorial, we are going to select 'Non-metal' by clicking on the '+' symbol next to the 'Non-metal' text. From the list produced, click once on 'Marble, blue'.

Now's click on the bag next to 'Marble, blue' with the left mouse button and hold.



8. Drag across to your car design and you will notice that the outline of your car is highlighted when you hover over it. Now let go of the mouse button when over the car.

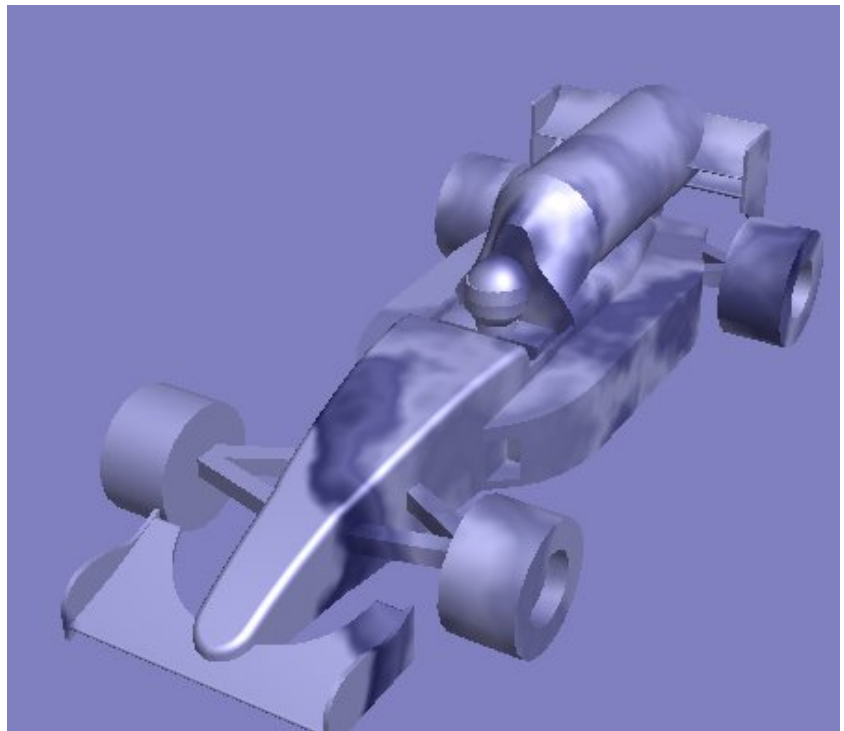
This process is the same to add any colour from the list to your design.



9. To show the colour you have added to your design, click on the 'Update Document' button at the top of your screen. This resembles a set of traffic lights.



10. The car is now coloured 'Marble Blue'.



11. You may want to add different colours to various sections of your vehicle. This can be done following the same process after you have selected the 'Select Faces' button. This is at the top of your screen.

